

NEVADA DEPARTMENT OF CORRECTIONS
2004 2005
STATISTICAL ABSTRACT



OFFENDER MANAGEMENT DIVISION

Statistics & Planning

Alejandra Livingston, Economist III

Sheila Hollaway, Statistician II
Katherine Houle, Program Officer I

Fritz Schlottman, Administrator

**NEVADA DEPARTMENT OF CORRECTIONS
OFFENDER MANAGEMENT DIVISION**

**2004 2005
STATISTICAL ABSTRACT
TABLE OF CONTENTS**

| | | Page |
|----|---|------|
| 1. | NEVADA COUNTY MAP | 1 |
| 2. | TABLE OF CONTENTS | 2 |
| 3. | NDOC LOCATIONS | |
| | Institutions | 3 |
| | Correctional Centers | 3 |
| | Restitution Centers | 3 |
| 4. | SYSTEM WIDE CAPACITY | |
| | Institutional Capacity | 4 |
| | Facilities Capacity | 4 |
| 5. | HISTORICAL AND PROJECTED TOTAL POPULATION | |
| | Male | 5 |
| | Female | 5 |
| 6. | HISTORICAL AND PROJECTED IN-HOUSE POPULATION | |
| | Male | 6 |
| | Female | 6 |
| 7. | NEVADA AND US PRISON POPULATION | |
| | Population Trends | 7 |
| 8. | NEVADA CORRECTIONAL POPULATION HIGHLIGHTS | |
| | Yearly Inmate Costs | 8 |
| | Incarceration Rates | 8 |
| | Recidivism Rates | 8 |
| | Prison Population and Gender | 9 |
| | Ethnicity Distributions by Gender | 10 |
| | Age Distributions by Gender | 11 |
| | Inmate Population with Children | 12 |
| | Yearly Admissions by Gender | 13 |
| | Yearly Releases by Gender | 14 |
| | Admissions by County of Commit | 15 |
| | New Commit Population and Offense Group | 16 |
| | Average Distribution of New Commits by Offense Group | 17 |
| | Parole Violators by Offense Group | 18 |
| | Average Distribution of Parole Violators by Offense Group | 19 |
| | Total Population by Gender and by Offense Group | 20 |
| | Parole Population by Gender and Offense Group | 21 |
| | Inmate Population and Sentence Structure | 22 |
| | Distribution of Inmate Population by Custody | 23 |

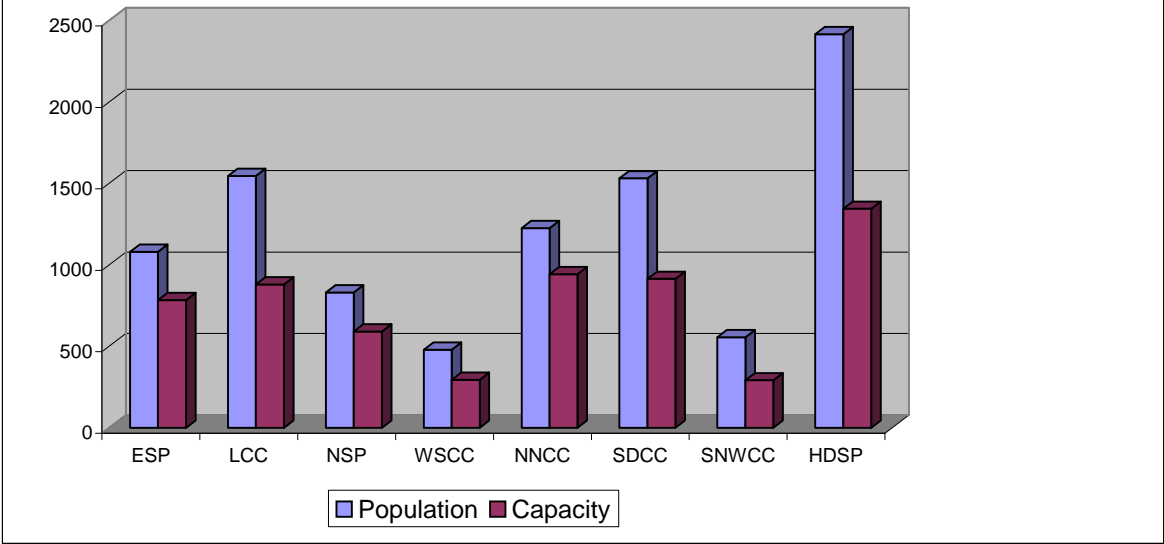
**NEVADA DEPARTMENT OF CORRECTIONS
SITE INFORMATION**

| INSTITUTIONS | | YEAR | COUNTY | CUSTODY LEVEL | POPULATION |
|---------------------|---|-------------|---------------|----------------------|-------------------|
| ESP | Ely State Prison | 1989 | White Pine | Maximum | Male |
| NSP | Nevada State Prison | 1864 | Carson City | Medium | Male |
| LCC | Lovelock Correctional Center | 1995 | Pershing | Medium | Male |
| WSCC | Warm Springs Correctional Center | 1964 | Carson City | Minimum | Male |
| NNCC | Northern Nevada Correctional Center | 1964 | Carson City | Medium | Male |
| SDCC | Southern Desert Correctional Center | 1982 | Clark | Medium | Male |
| SNCC | Southern Nevada Correctional Center | 1979 | Clark | Medium | Male |
| HDSP | High Desert State Prison | 2000 | Clark | Medium | Male |
| SNWCC | Southern Nevada Women's Correctional Center | 1997 | Clark | Multiple | Female |

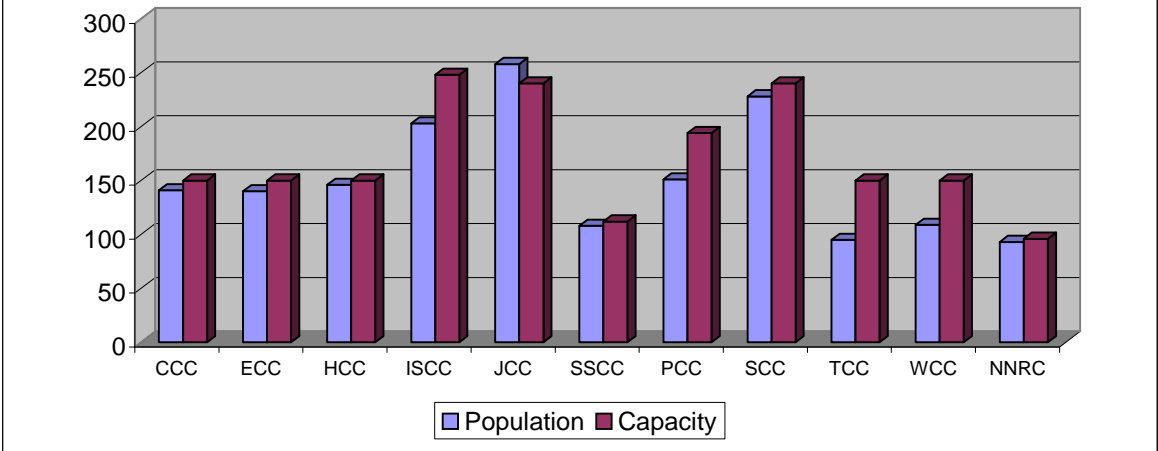
| CORRECTIONAL CENTERS | | YEAR | COUNTY | CUSTODY LEVEL | POPULATION |
|-----------------------------|------------------------------------|-------------|---------------|----------------------|-------------------|
| ECC | Ely Correctional Center | 1984 | White Pine | Minimum | Male |
| JCC | Jean Correctional Center | 1987 | Clark | Minimum | Female |
| WCC | Wells Correctional Center | 1984 | Elko | Minimum | Male |
| CCC | Carlin Correctional Center | 1968 | Elko | Minimum | Male |
| HCC | Humboldt Correctional Center | 1986 | Humboldt | Minimum | Male |
| TCC | Tonopah Correctional Center | 1991 | Mineral | Minimum | Male |
| PCC | Pioche Correctional Center | 1980 | Lincoln | Minimum | Male |
| SCC | Silver Springs Correctional Center | 1991 | Lyon | Minimum | Female |
| SCC | Stewart Correctional Center | 1980 | Carson City | Minimum | Male |
| ISCC | Indian Springs Correctional Center | 1991 | Clark | Minimum | Male |

| RESTITUTION CENTER & TRANSITIONAL HOUSING | | YEAR | COUNTY | CUSTODY LEVEL | POPULATION |
|--|------------------------------------|-------------|---------------|----------------------|-------------------|
| NNRC | Northern Nevada Restitution Center | 1979 | Washoe | Community Trustee | Male |
| CGTH | Casa Grande Transitional Housing | 2005 | Clark | Community Trustee | Male |

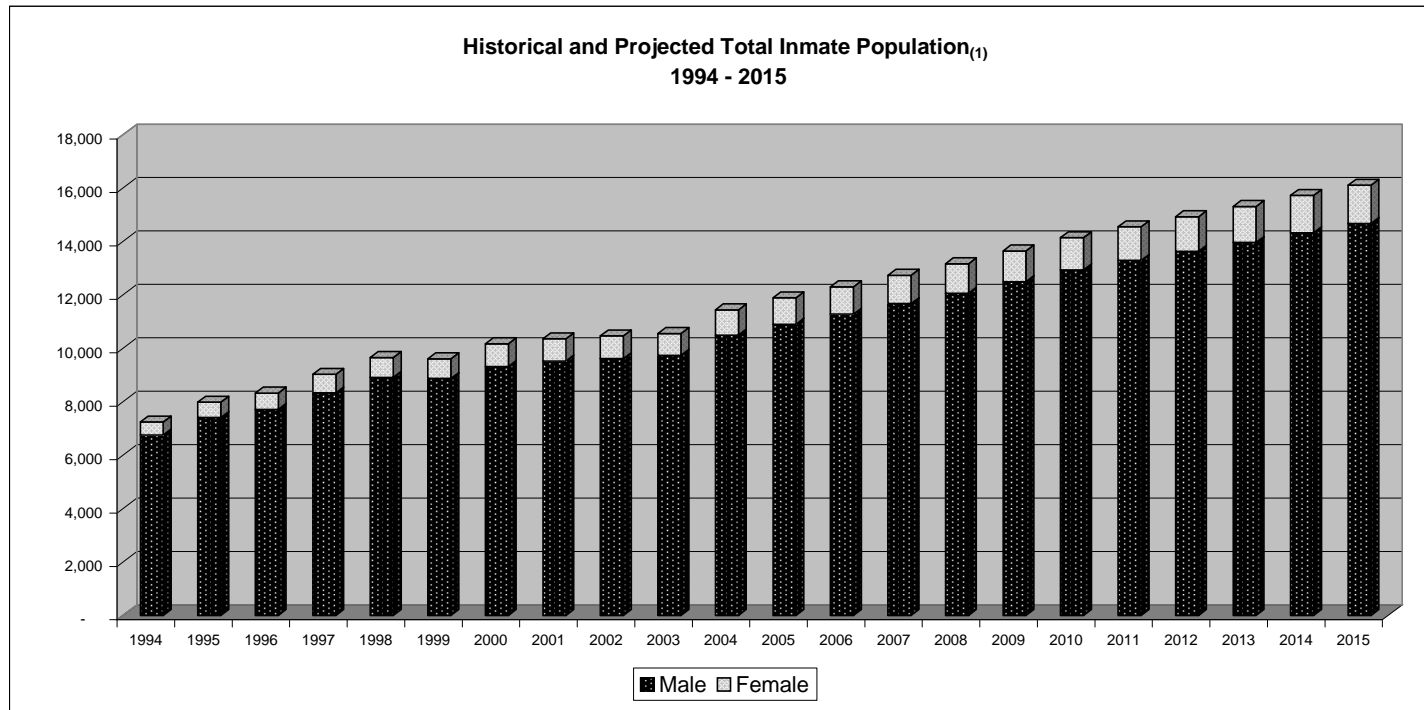
Institutional Population and Design Capacity June 2005



Facility Population and Capacity June 2005



At the end of Fiscal Year 2005, NDOC institutional population was up to 180% of design capacity.



| | 1994 | 1995 | 1996 | 1997 | 1998 | 1999 | 2000 | 2001 | 2002 | 2003 | 2004 | 2005 | 2006 | 2007 | 2008 | 2009 | 2010 | 2011 | 2012 | 2013 | 2014 | 2015 |
|--------|-------|-------|-------|-------|-------|-------|--------|--------|--------|--------|--------|--------|--------|--------|--------|--------|--------|--------|--------|--------|--------|--------|
| Male | 6,753 | 7,407 | 7,713 | 8,329 | 8,908 | 8,868 | 9,316 | 9,520 | 9,612 | 9,736 | 10,490 | 10,901 | 11,277 | 11,673 | 12,061 | 12,491 | 12,935 | 13,290 | 13,628 | 13,959 | 14,328 | 14,673 |
| Female | 484 | 574 | 612 | 695 | 743 | 737 | 856 | 834 | 848 | 816 | 949 | 988 | 1,020 | 1,060 | 1,102 | 1,148 | 1,206 | 1,258 | 1,297 | 1,346 | 1,391 | 1,431 |
| Total | 7,237 | 7,981 | 8,325 | 9,024 | 9,651 | 9,605 | 10,172 | 10,354 | 10,460 | 10,552 | 11,439 | 11,889 | 12,297 | 12,733 | 13,163 | 13,639 | 14,141 | 14,548 | 14,925 | 15,305 | 15,719 | 16,104 |

From calendar year-end 1994 to 2004, NDOC's female population grew by 94.9% or 462 inmates. During the same period, NDOC's female population grew at an average yearly rate of 7.2%.

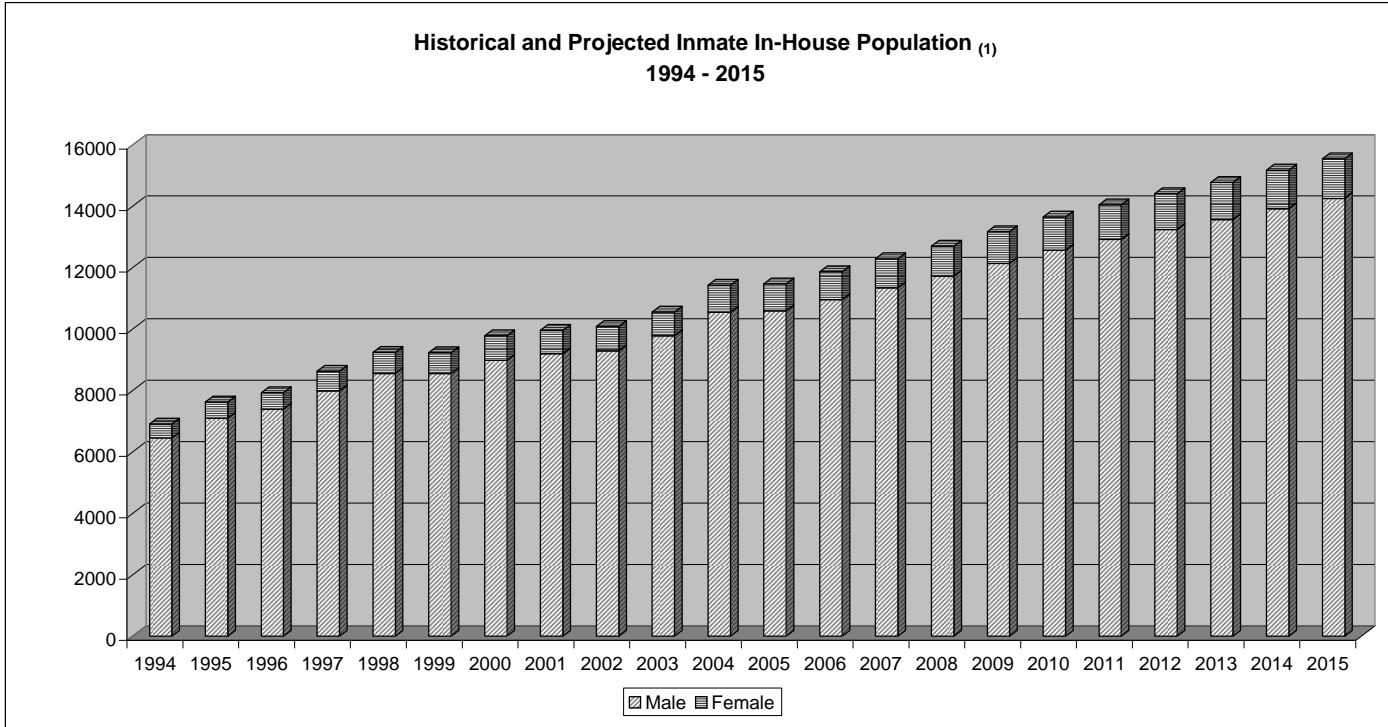
From calendar year-end 2005 to 2015 NDOC's female population is expected to increase at an average rate of 3.8% per year, or by 44.8% or 443 inmates throughout the decade. The absolute growth is equivalent to the size of Warms Springs Correctional Center.

From calendar year-end 1994 to 2004, NDOC's male population grew by 55.3% or 3,737 inmates. During the same period, NDOC's male population grew at an average rate of 4.6%.

From calendar year-end 2005 to 2015 NDOC male population is expected to increase by 34.6% or 3,772 inmates. This represents an expected average growth of 3.1%; thus, the male population will increase three times the size of Northern Nevada Correctional Center.

⁽¹⁾ Numbers represent calendar year-end figures and exclude contracted inmates from the states of Wyoming and Washington.
Source: NDOC Report #1.1 and JFA Associates March 2005 Projection.
Figures for years 1994 - 2004 are actual, and figures for 2005 - 2015 are projected.

**Historical and Projected Inmate In-House Population (1)
1994 - 2015**



| | 1994 | 1995 | 1996 | 1997 | 1998 | 1999 | 2000 | 2001 | 2002 | 2003 | 2004 | 2005 | 2006 | 2007 | 2008 | 2009 | 2010 | 2011 | 2012 | 2013 | 2014 | 2015 |
|--------|------|------|------|------|------|------|------|------|-------|-------|-------|-------|-------|-------|-------|-------|-------|-------|-------|-------|-------|-------|
| Male | 6448 | 7098 | 7391 | 7992 | 8552 | 8551 | 8979 | 9200 | 9295 | 9786 | 10547 | 10591 | 10957 | 11341 | 11718 | 12136 | 12568 | 12913 | 13241 | 13563 | 13921 | 14256 |
| Female | 463 | 523 | 539 | 631 | 687 | 676 | 806 | 759 | 786 | 764 | 880 | 880 | 910 | 946 | 985 | 1028 | 1081 | 1129 | 1165 | 1210 | 1252 | 1289 |
| Total | 6911 | 7621 | 7930 | 8623 | 9239 | 9227 | 9785 | 9959 | 10081 | 10550 | 11427 | 11471 | 11867 | 12287 | 12703 | 13164 | 13649 | 14042 | 14406 | 14773 | 15173 | 15545 |

(1) Numbers represent calendar year-end figures.

Source: NDOC Reports #1.1 and 1.2; JFA Associates March 2005 in-house adjusted projection.
 Figures for years 1994 - 2004 are actual, and figures for 2005 - 2015 are adjusted projected.

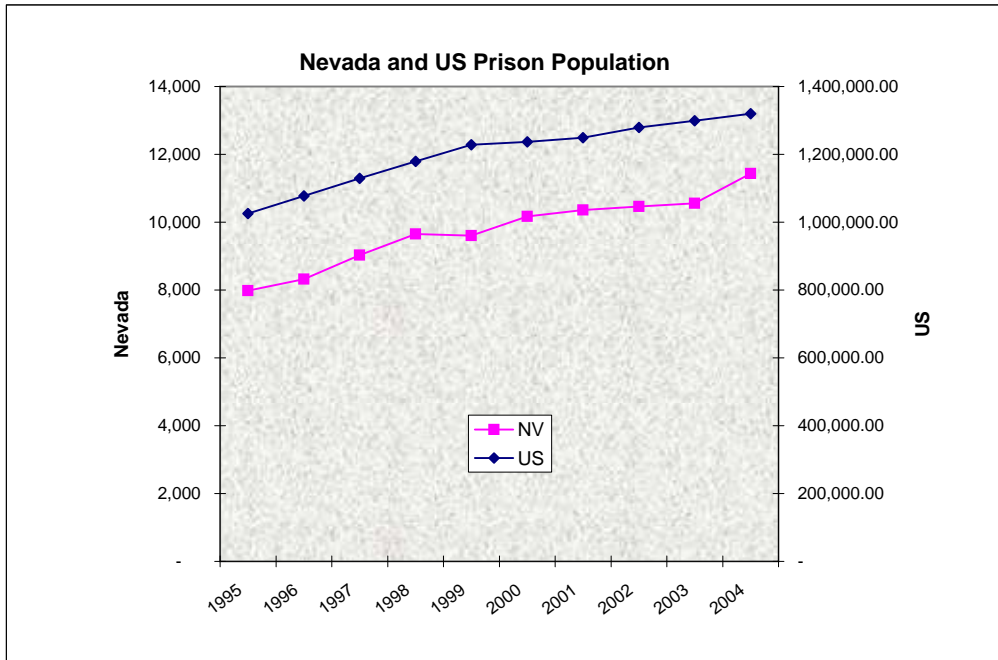
During the decade 1994 to 2004, the female in-house population nearly doubled - experiencing a growth of 90.06% or 417 inmates.

During the same decade, the male in-house population increased by 63.57% or 4,143 inmates.

Overall, NDOC's in-house population increased at an average rate of 5.86% per year.

Population on the Rise⁽¹⁾

During the decade of 1994 to 2004, the Nevada State Prison population increased at an average yearly rate of 4.7% while the US State population increased at a rate of 3.26%. In 2004, the Nevada State Prison population grew by 8.3% and it was one of the top ten states experiencing at least 5% growth.



⁽¹⁾ NDOC population reports for Nevada, Bureau of Justice Statistics for US State Prison Population.
JFA Associates March 2005 Projection.

NEVADA CORRECTIONAL POPULATION HIGHLIGHTS

| Yearly Cost per Inmate | | | | | |
|------------------------|--------------|--------------|--------------|--------------|--------------|
| 2000 | 2001 | 2002 | 2003 | 2004 | Avg Cost |
| \$ 15,425.00 | \$ 16,415.00 | \$ 17,917.00 | \$ 18,059.00 | \$ 17,676.00 | \$ 17,098.40 |

During the first part of the decade, Nevada spent an average of \$17,000 per inmate. The in-house population is expected to increase by 2,222 offenders by the end of the decade. If this cost stays constant, the increase in the offender population will cost Nevada an additional \$37,993,000.

| Incarceration Rates | | |
|---------------------|-----|-----|
| | NV | US |
| 2004 | 472 | 422 |
| 2005 | 467 | 423 |

Prison populations are for inmates held at state prisons only, exclusive of federal and jail inmates as of July 1st of each year. Rates are for prisoners sentenced to more than one year.

Sources:

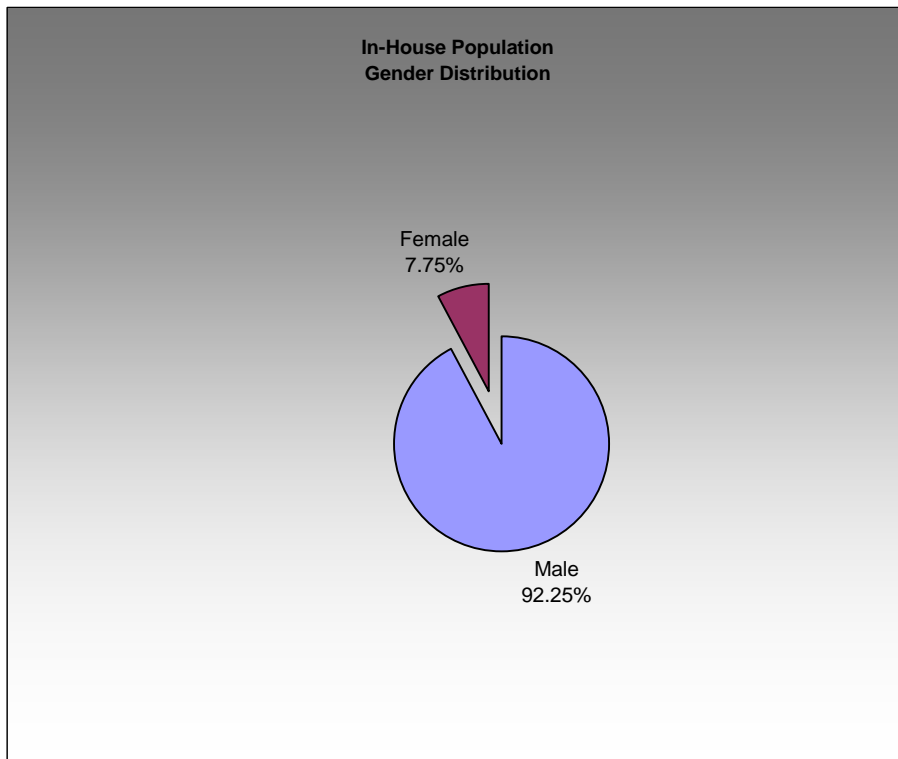
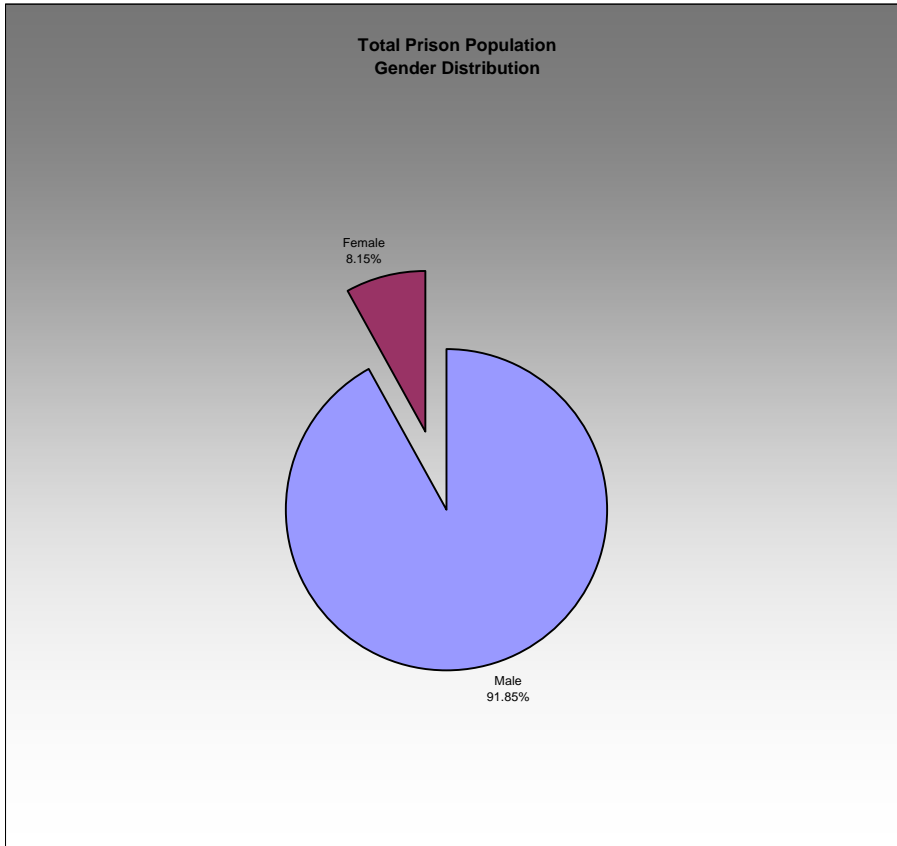
*Bureau of Justice Statistics.
Nevada State Demographer
US Census Bureau
Nevada Department of Corrections*

| Recidivism Rates Measured in Terms of Returns to Prison | | | | |
|--|----------|---------------|---------|-----------|
| Release Year | Releases | Returns Years | Returns | Cum. Rate |
| 1998 | 4904 | 1998 - 2001 | 1134 | 23.12% |
| 2000 | 5425 | 2000 - 2003 | 1406 | 25.92% |
| 2001 | 5585 | 2001 - 2004 | 1445 | 25.87% |
| 2002 | 5196 | 2002 - 2005 | 1370 | 26.37% |

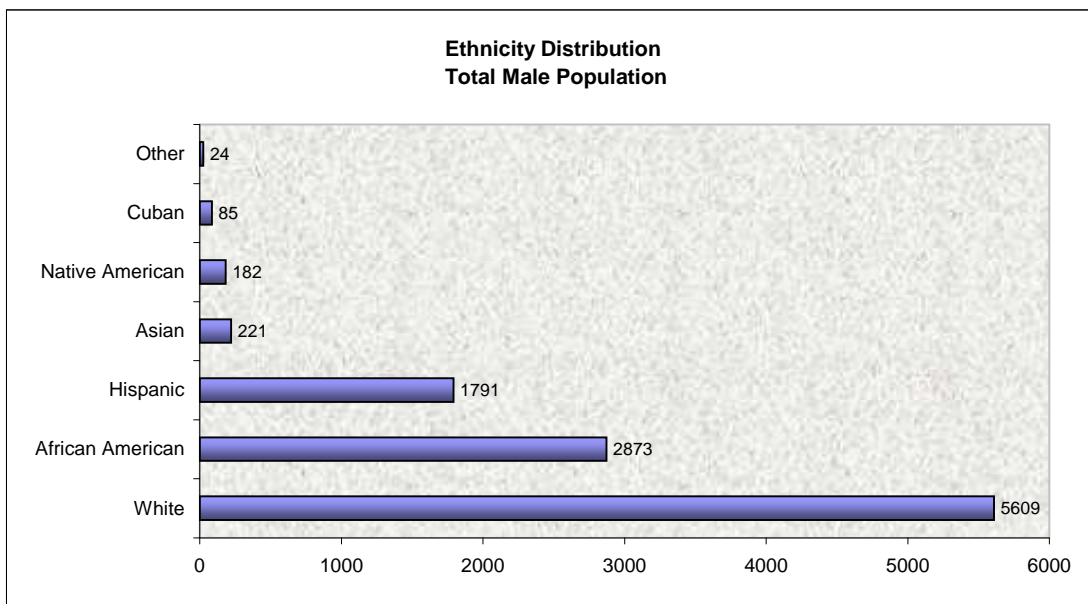
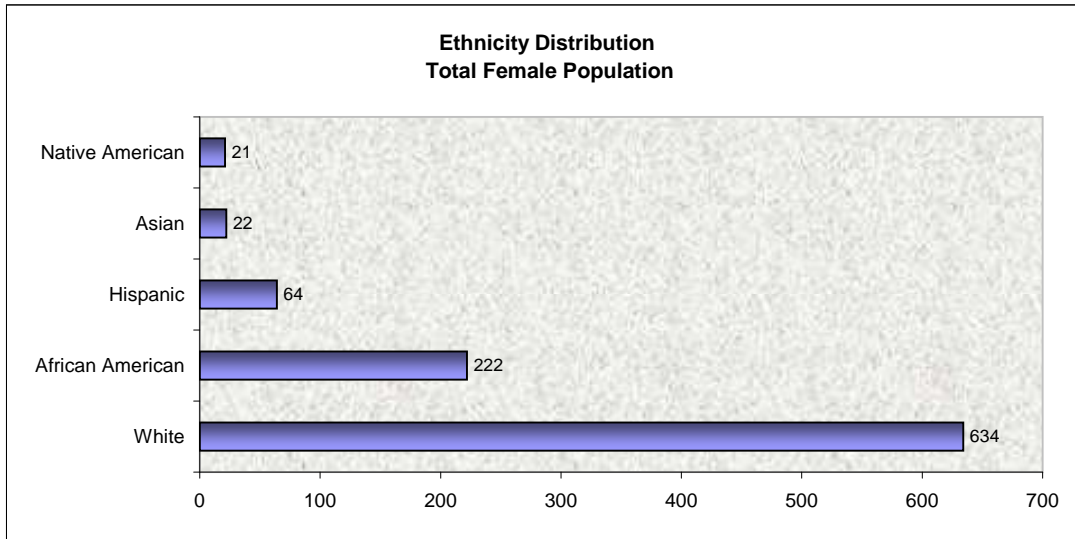
Recidivism rates in the Nevada State Prison System are derived by tracking the number of offenders that exit the prison system and who are re-imprisoned in Nevada either under a new conviction or for violating their parole. These rates may not be comparable with those derived by other jurisdictions.

Since the beginning of the decade, recidivism rates in Nevada have been fairly constant.

Prison Population and Gender



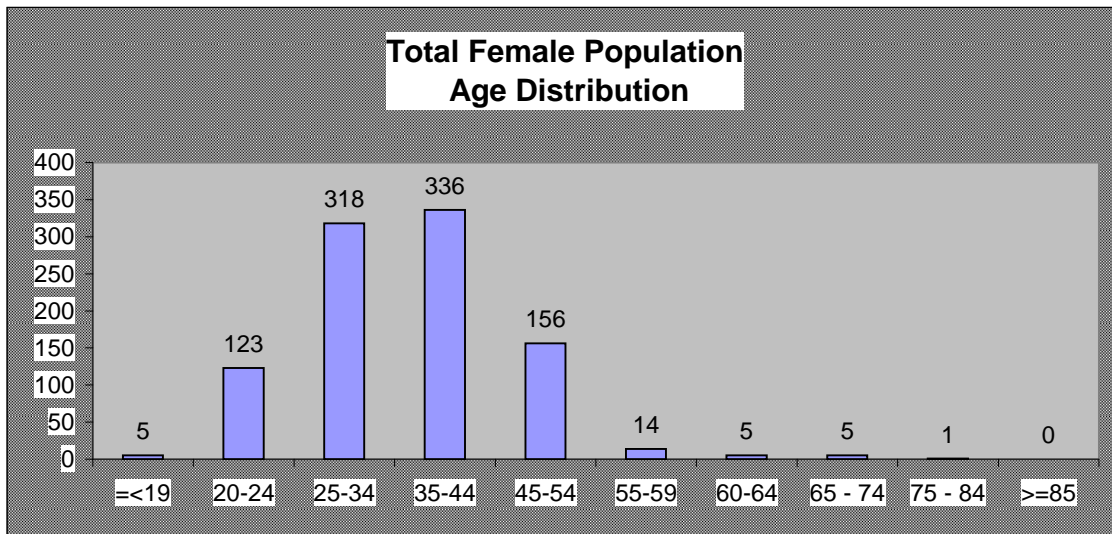
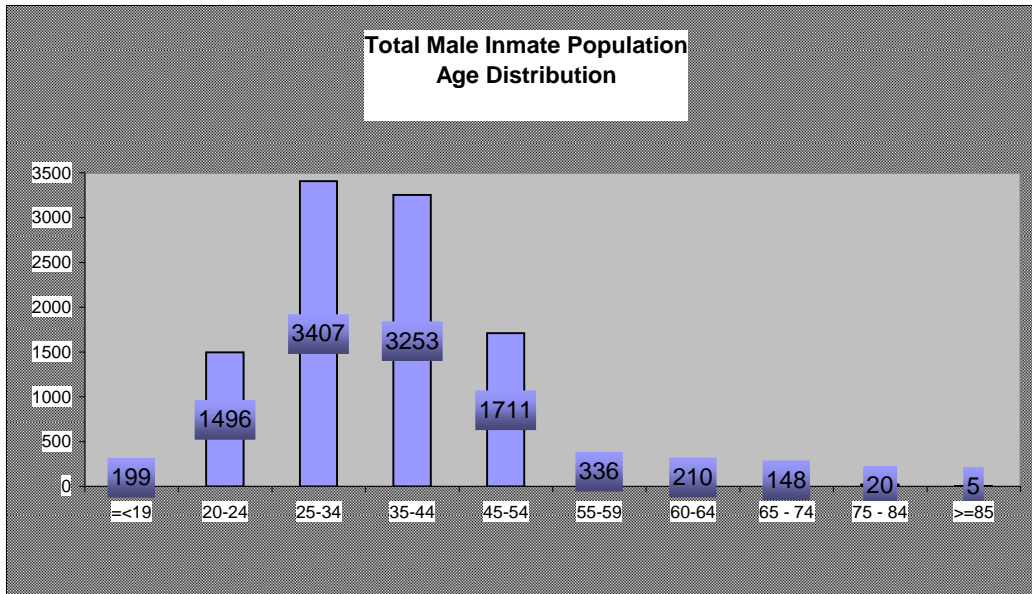
The prison population is mainly comprised of males which is more than 11 times the size of the female population.



| | White | African American | Hispanic | Asian | Native American | Cuban | Other |
|---------|--------|------------------|----------|-------|-----------------|-------|-------|
| Females | 65.84% | 23.05% | 6.65% | 2.28% | 2.18% | 0.00% | 0.00% |
| Males | 52.01% | 26.64% | 16.61% | 2.05% | 1.69% | 0.79% | 0.22% |

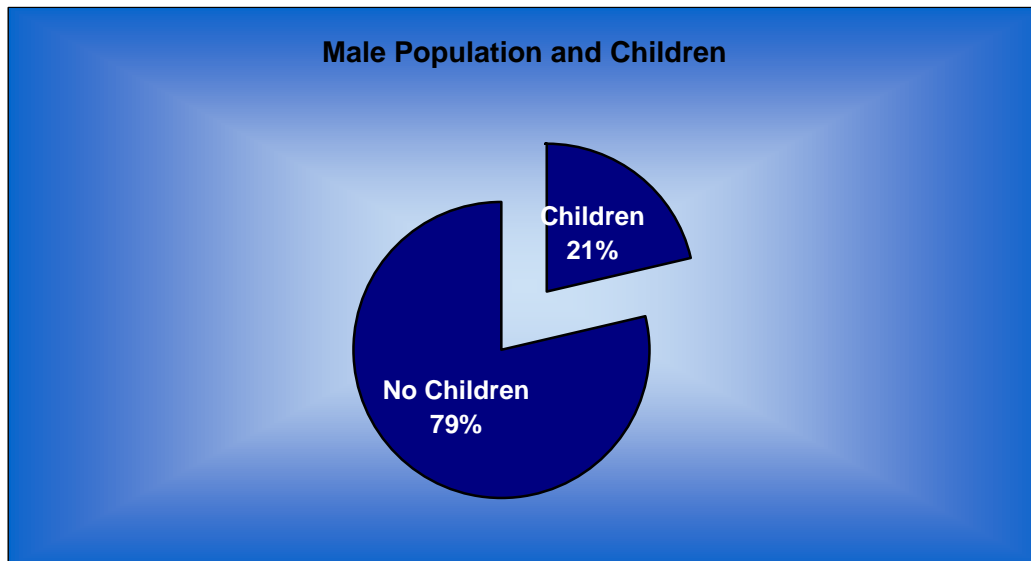
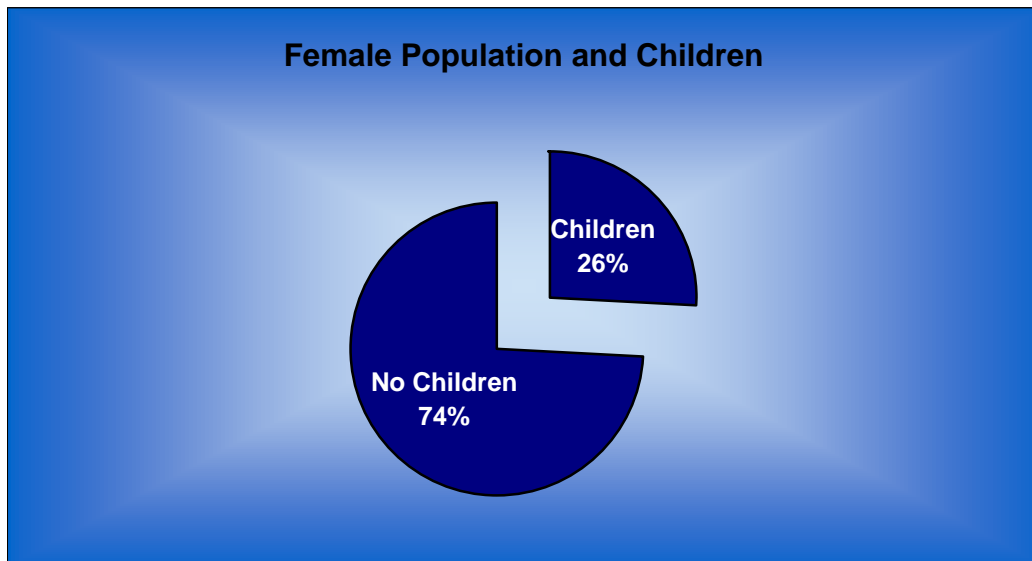
NDOC's population is primarily comprised of white males and females. African Americans and Hispanics are the second and third largest ethnicity groups respectively.

Age Groupings for NDOC Total Prison Population



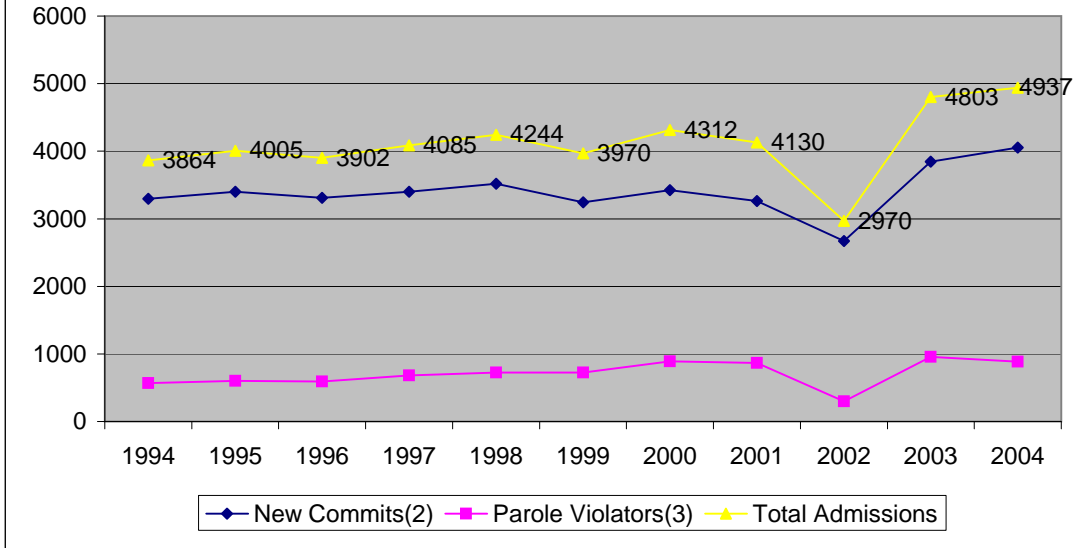
The typical new prison commitment to Nevada State Prison is 20 to 39 years of age. The stacking effect of the aging of the population is reflected by the age distribution depicted above. More than half of the prison population is in the 25 to 44 years of age bracket.

NDOC INMATE POPULATION AND CHILDREN



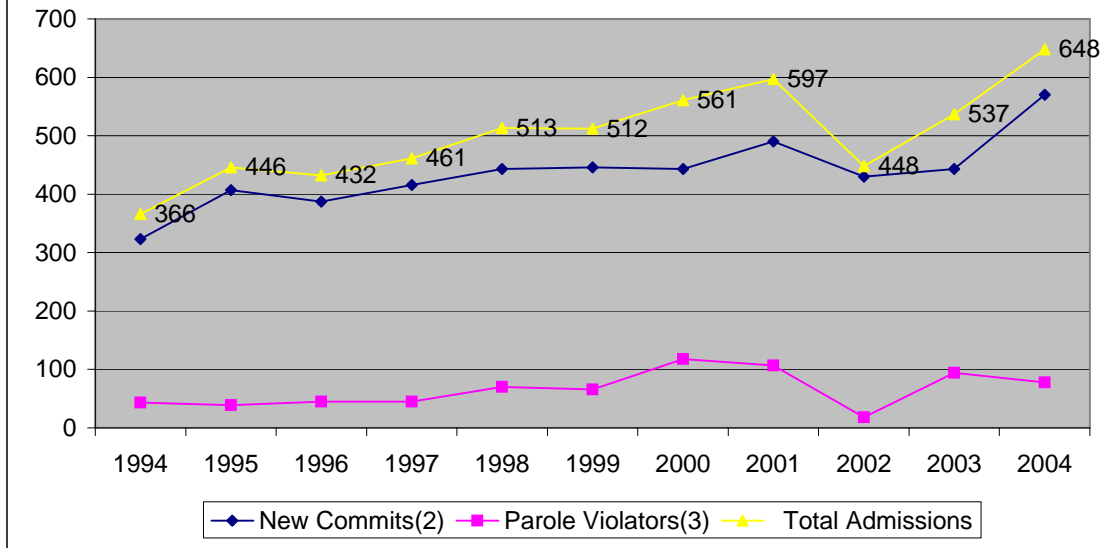
| | Female | Male |
|-------------|--------|-------|
| Children | 244 | 2317 |
| No Children | 704 | 8510 |
| Total | 948 | 10827 |

Yearly Male Admissions⁽¹⁾



Between 1994 and 2004, the male population of admissions has grown by 27.76%

Yearly Female Admissions⁽¹⁾



Between 1994 and 2004 the female population of admissions increased by 77.05 %

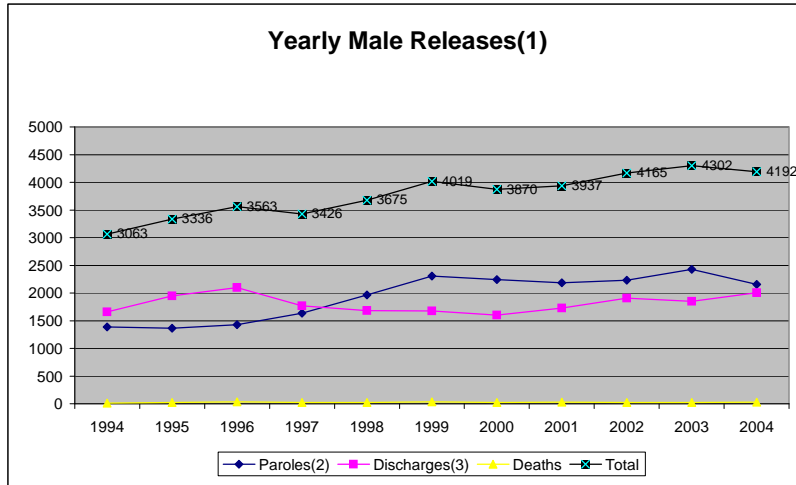
Effective July 1, 1995, Truth-in-Sentencing Law requires all offenders to serve 100% of their minimum prison term. The effect of the law was felt six months later by affecting 28% of admissions (including parole technical violators). Three years later, nearly 80% of admissions were sentenced under the new law.

(1) Source, NDOC Report 2.2

(2) Newly admitted offenders, safekeepers, and never physically received offenders serving a concurrent sentence in another state.

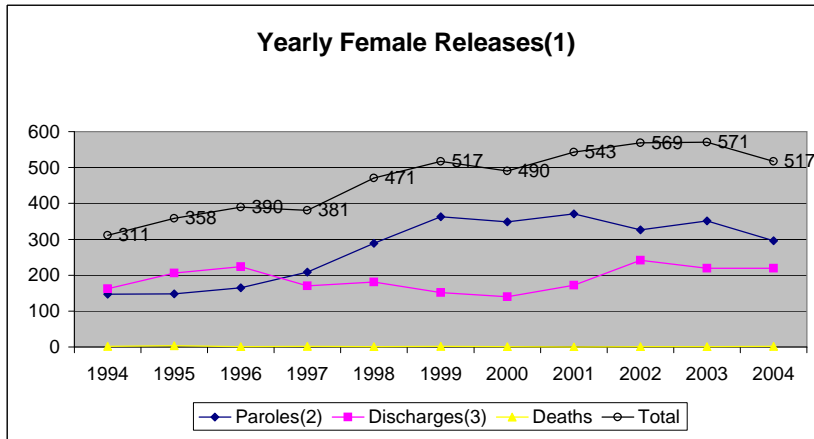
(3) Parole violators and mandatory parole violators.

| MALE RELEASES YEARLY(1) | | | | | | | | | | | |
|-------------------------|------|------|------|------|------|------|------|------|------|------|------|
| | 1994 | 1995 | 1996 | 1997 | 1998 | 1999 | 2000 | 2001 | 2002 | 2003 | 2004 |
| Paroles(2) | 1388 | 1367 | 1430 | 1634 | 1966 | 2307 | 2242 | 2183 | 2233 | 2429 | 2158 |
| Discharges(3) | 1661 | 1948 | 2099 | 1769 | 1683 | 1676 | 1604 | 1726 | 1908 | 1850 | 2003 |
| Deaths | 14 | 21 | 34 | 23 | 26 | 36 | 24 | 28 | 24 | 23 | 31 |
| Total | 3063 | 3336 | 3563 | 3426 | 3675 | 4019 | 3870 | 3937 | 4165 | 4302 | 4192 |



From calendar year 1994 to 2004, the male population of releases increased by 36.86%.

| FEMALE RELEASES YEARLY | | | | | | | | | | | |
|------------------------|------|------|------|------|------|------|------|------|------|------|------|
| | 1994 | 1995 | 1996 | 1997 | 1998 | 1999 | 2000 | 2001 | 2002 | 2003 | 2004 |
| Paroles(2) | 147 | 148 | 165 | 209 | 289 | 363 | 349 | 371 | 326 | 351 | 296 |
| Discharges(3) | 162 | 206 | 224 | 170 | 181 | 152 | 140 | 172 | 242 | 219 | 219 |
| Deaths | 2 | 4 | 1 | 2 | 1 | 2 | 1 | 0 | 1 | 1 | 2 |
| Total | 311 | 358 | 390 | 381 | 471 | 517 | 490 | 543 | 569 | 571 | 517 |



From calendar year 1994 to 2004, the female population of releases increased by 66.24%.

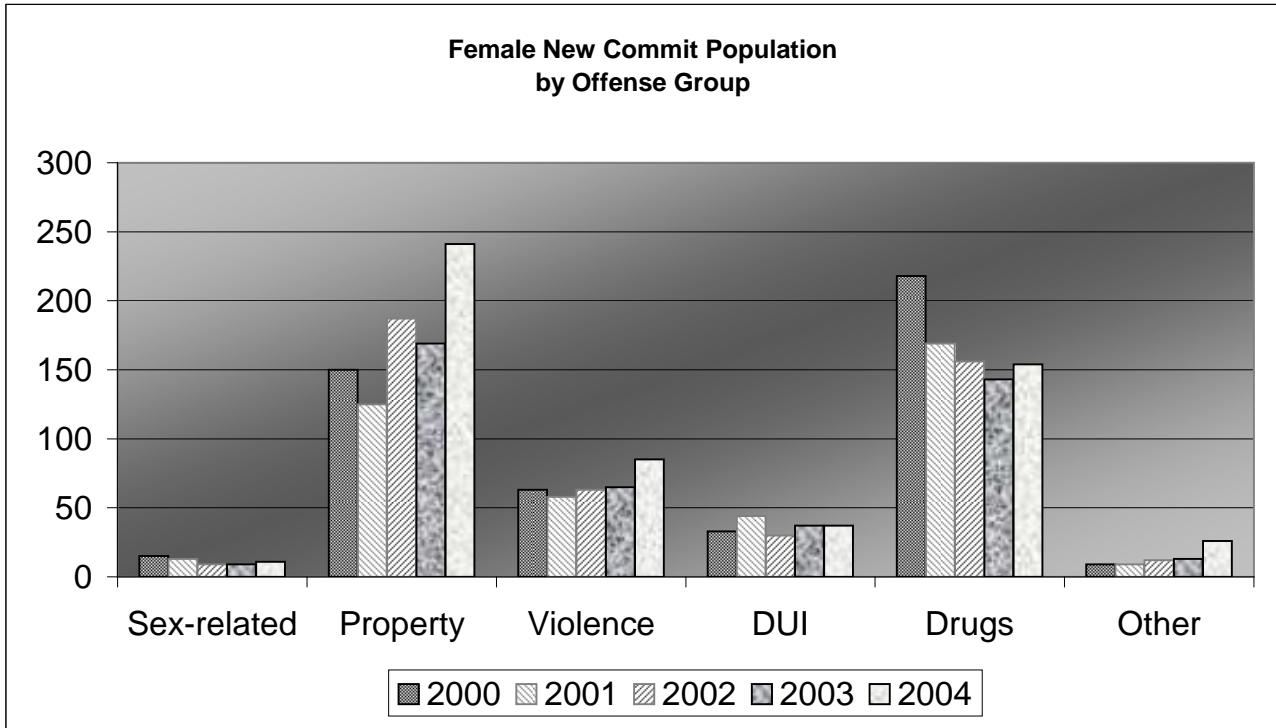
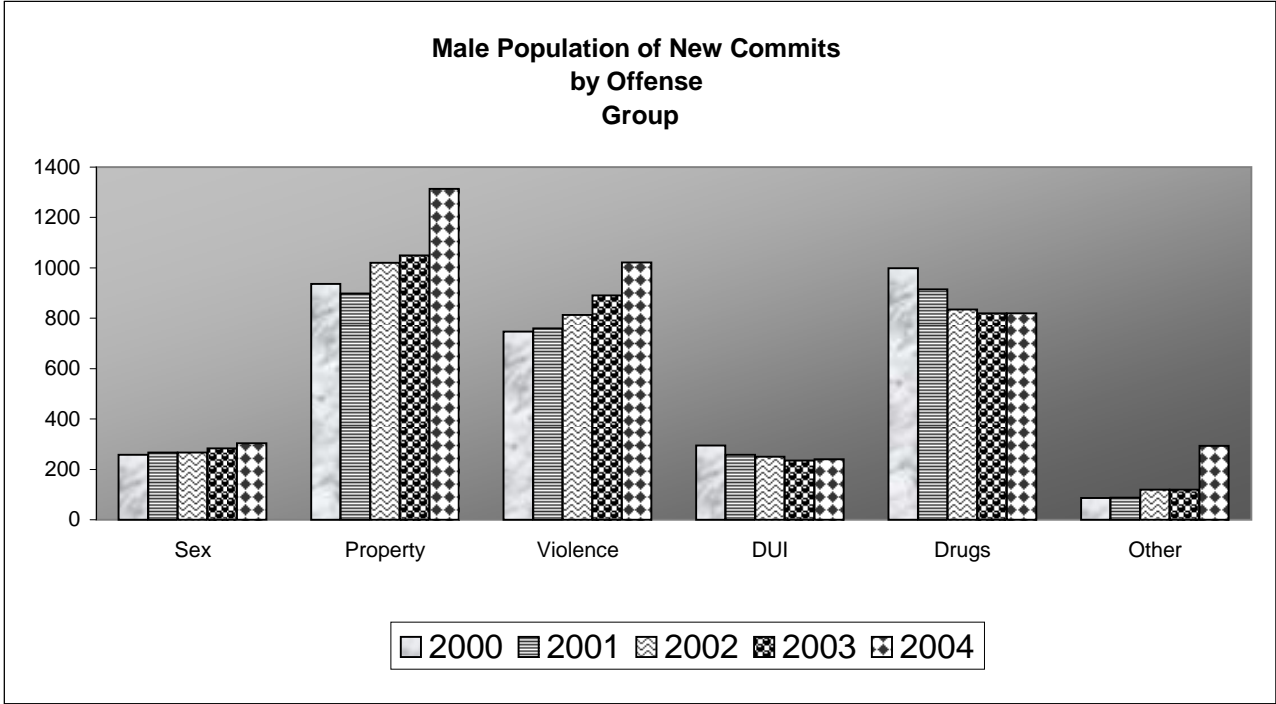
- (1) Source: NDOC Statistical Report No. 2.3
- (2) This number represents the number of inmates that have paroled or who were mandatory paroled during the period.
- (3) This number represents the number of inmates who were released because their sentences expired, were returned to the committing authority, their sentences were overturned, or appeal bonded.

PRISON COMMITS THROUGHOUT NEVADA

| Female Admissions by County | | | | | | | | | | | | | | | | | | | |
|-----------------------------|--------|--------|-----------|---------|-------|-----------|--------|----------|--------|---------|-------|---------|-------|----------|--------|--------|------------|---------|---------|
| Calendar Year | Carson | Clark | Churchill | Douglas | Elko | Esmeralda | Eureka | Humboldt | Lander | Lincoln | Lyon | Mineral | Nye | Pershing | Storey | Washoe | White Pine | Boarder | Year |
| 2002 | 8 | 334 | 7 | 3 | 25 | 0 | 1 | 12 | 0 | 3 | 16 | 0 | 2 | 3 | 0 | 148 | 8 | 0 | 570 |
| 2003 | 7 | 289 | 5 | 7 | 21 | 0 | 0 | 10 | 0 | 1 | 8 | 5 | 12 | 1 | 16 | 132 | 22 | 0 | 536 |
| 2004 | 15 | 349 | 12 | 9 | 16 | 0 | 0 | 6 | 0 | 3 | 15 | 3 | 4 | 2 | 1 | 209 | 3 | 2 | 649 |
| Three -Year Avg | 10 | 324 | 8 | 6 | 21 | 0 | 0 | 9 | 0 | 2 | 13 | 3 | 6 | 2 | 6 | 163 | 11 | 1 | 585 |
| | 1.71% | 55.38% | 1.37% | 1.03% | 3.59% | 0.00% | 0.00% | 1.54% | 0% | 0.34% | 2.22% | 0.51% | 1.03% | 0.34% | 1.03% | 27.86% | 1.88% | 0.17% | 100.00% |

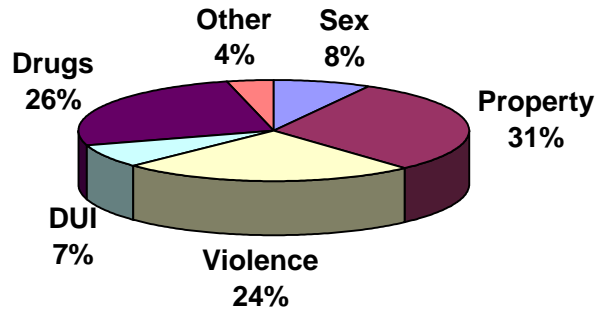
| Male Admissions by County | | | | | | | | | | | | | | | | | | | |
|---------------------------|--------|--------|-----------|---------|-------|-----------|--------|----------|--------|---------|-------|---------|-------|----------|--------|--------|------------|---------|------------|
| Calendar Year | Carson | Clark | Churchill | Douglas | Elko | Esmeralda | Eureka | Humboldt | Lander | Lincoln | Lyon | Mineral | Nye | Pershing | Storey | Washoe | White Pine | Boarder | Year Total |
| 2002 | 114 | 2563 | 56 | 46 | 130 | 2 | 4 | 41 | 9 | 8 | 79 | 21 | 75 | 14 | 5 | 1057 | 20 | 18 | 4262 |
| 2003 | 92 | 2764 | 55 | 40 | 123 | 5 | 5 | 36 | 5 | 10 | 59 | 21 | 47 | 7 | 5 | 1131 | 21 | 372 | 4798 |
| 2004 | 134 | 3047 | 60 | 71 | 102 | 4 | 7 | 23 | 5 | 7 | 70 | 8 | 83 | 10 | 0 | 1217 | 25 | 52 | 4925 |
| Three -Year Avg | 113 | 2791 | 57 | 52 | 118 | 4 | 5 | 33 | 6 | 8 | 69 | 17 | 68 | 10 | 3 | 1135 | 22 | 147 | 4662 |
| | 2.42% | 59.87% | 1.22% | 1.12% | 2.53% | 0.09% | 0.11% | 0.71% | 0.13% | 0.17% | 1.48% | 0.36% | 1.46% | 0.21% | 0.06% | 24.35% | 0.47% | 3.15% | 100.00% |

The two largest counties in the state, Clark County and Washoe County, are responsible for the largest portion of female and male admissions over time. Between calendar years 2002 and 2004, Clark County admitted more than one half of all inmates while Washoe County admitted close to one fourth of all inmates in the State.

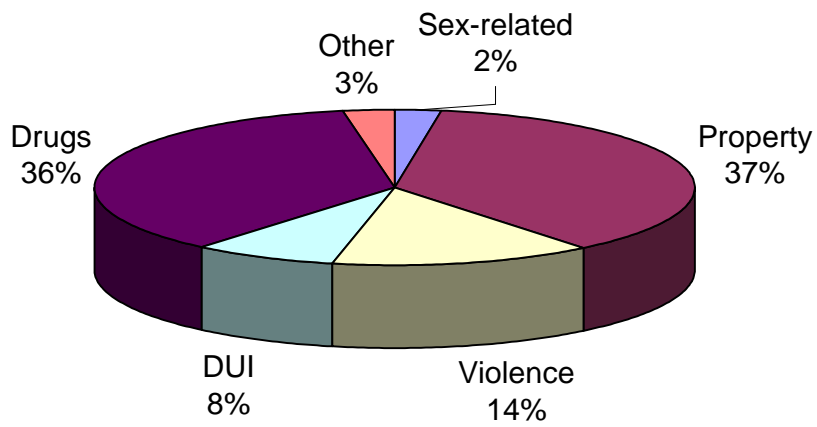


Property offenders and drug offenders have been the two largest offense groups of new commits over time.

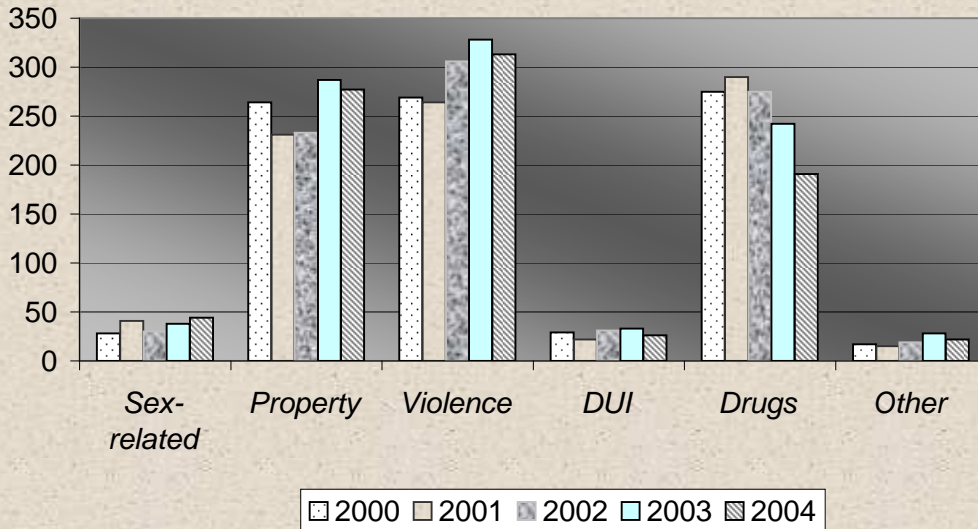
**Average Distribution Male New Commits
by Offense Group 2000 - 2004**



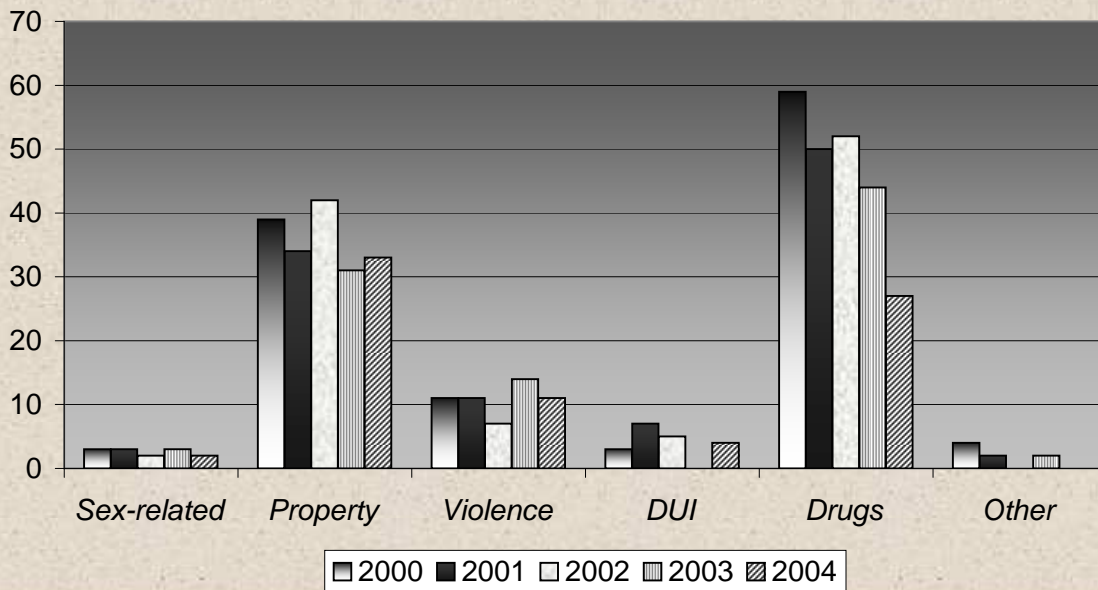
**Average Distribution of Female New Commits
by Offense Group 2000 - 2004**



Male Parole Violators by Offense Group 2000 - 2004

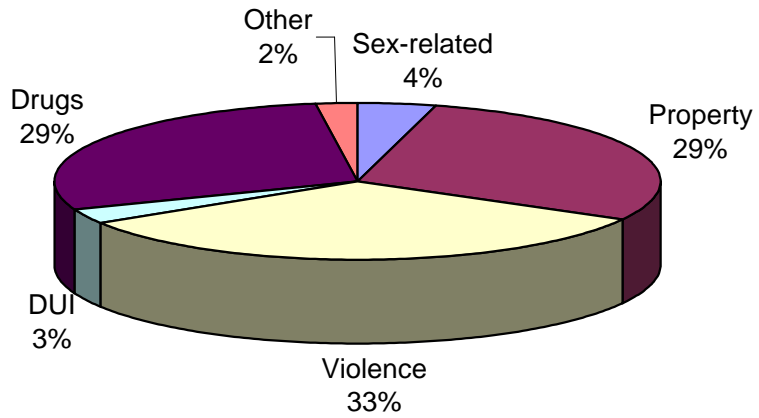


Female Parole Violators by Offense Group 2000 - 2004

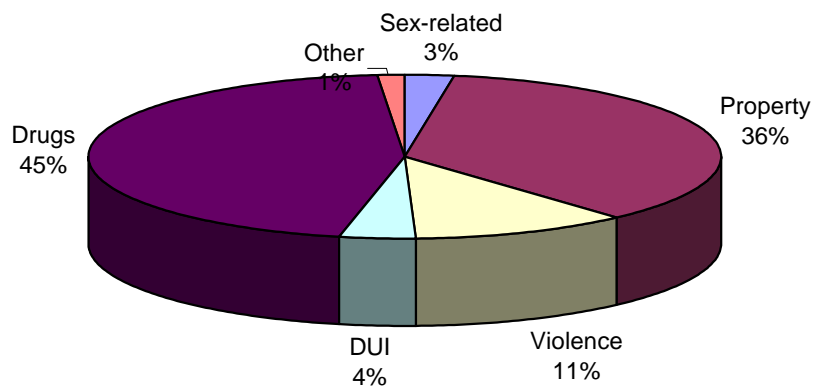


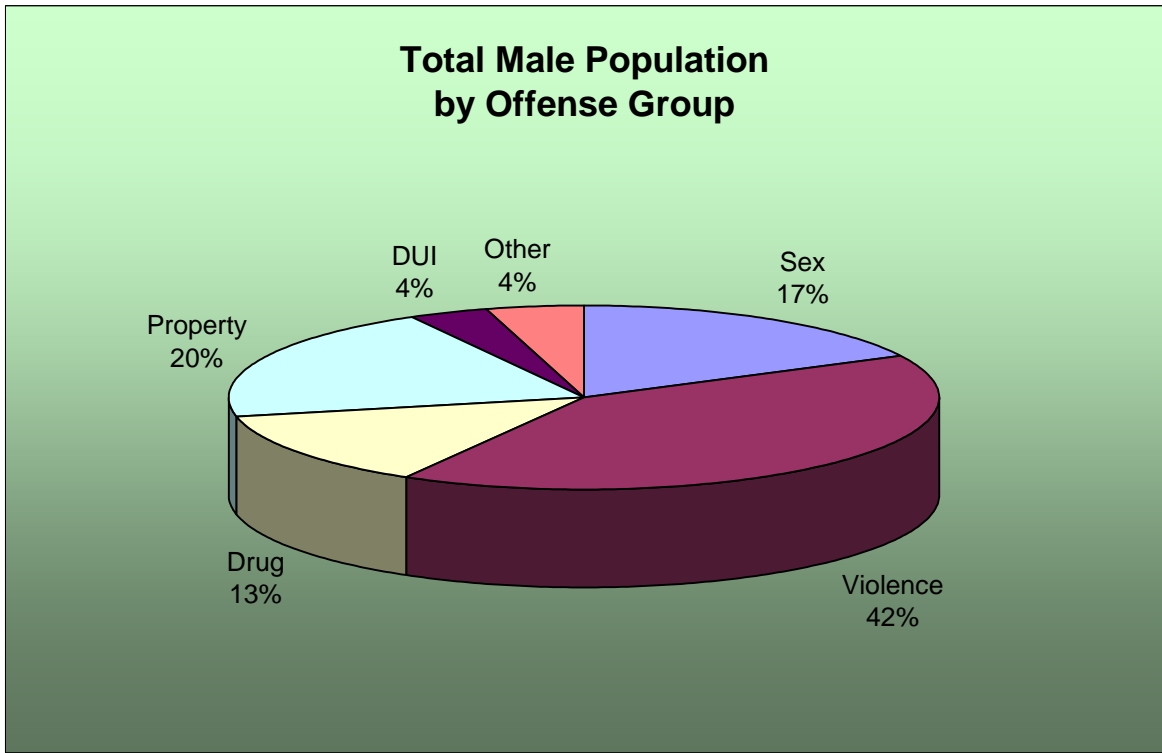
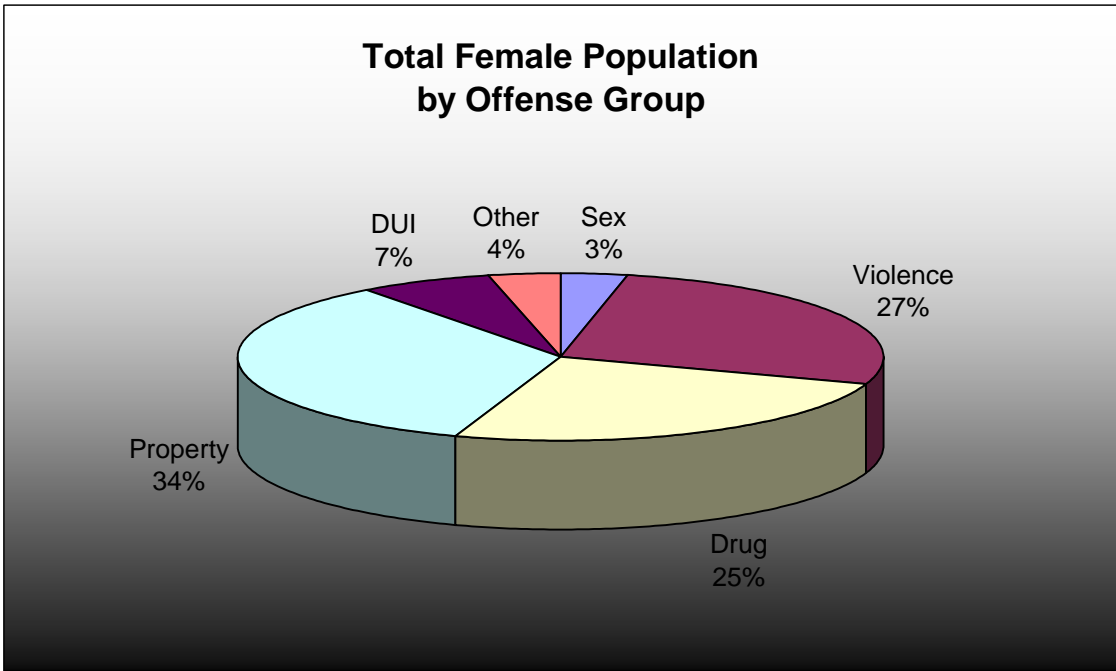
Annual data for the first part of the 2000 decade suggests that the largest proportion of Nevada's male parole violators are violent offenders. However, the offense ranking is different for female parole violators which is mainly represented by drug offenders.

**Average Distribution of Male Parole Violators
by Offense Group
2000 - 2004**

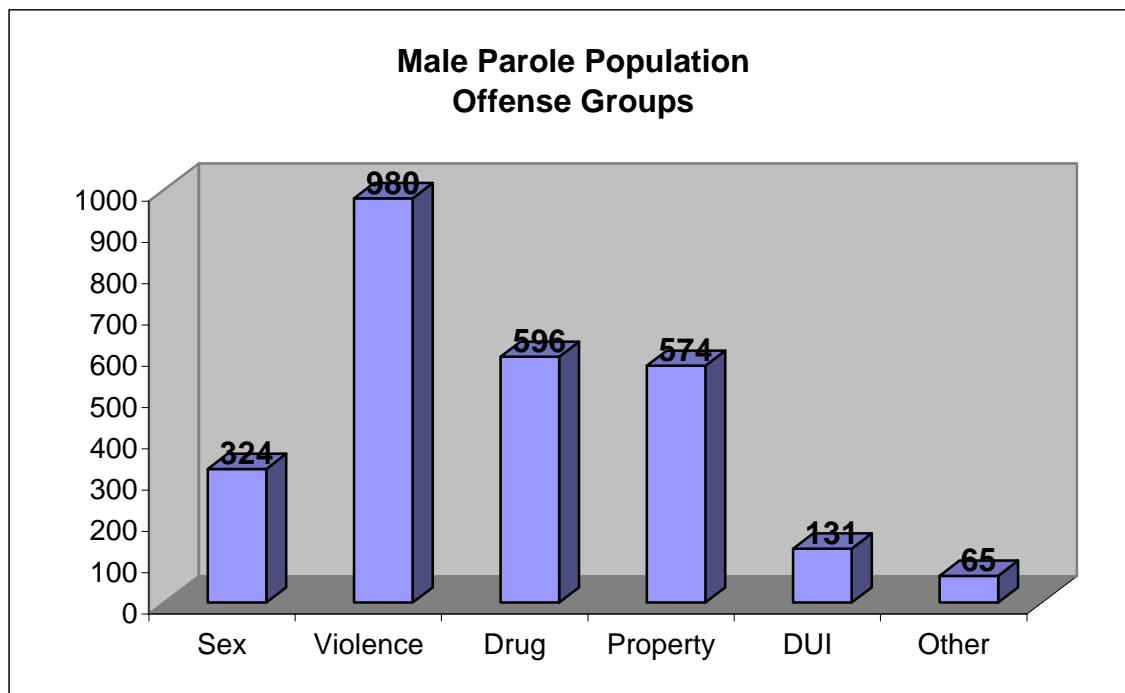
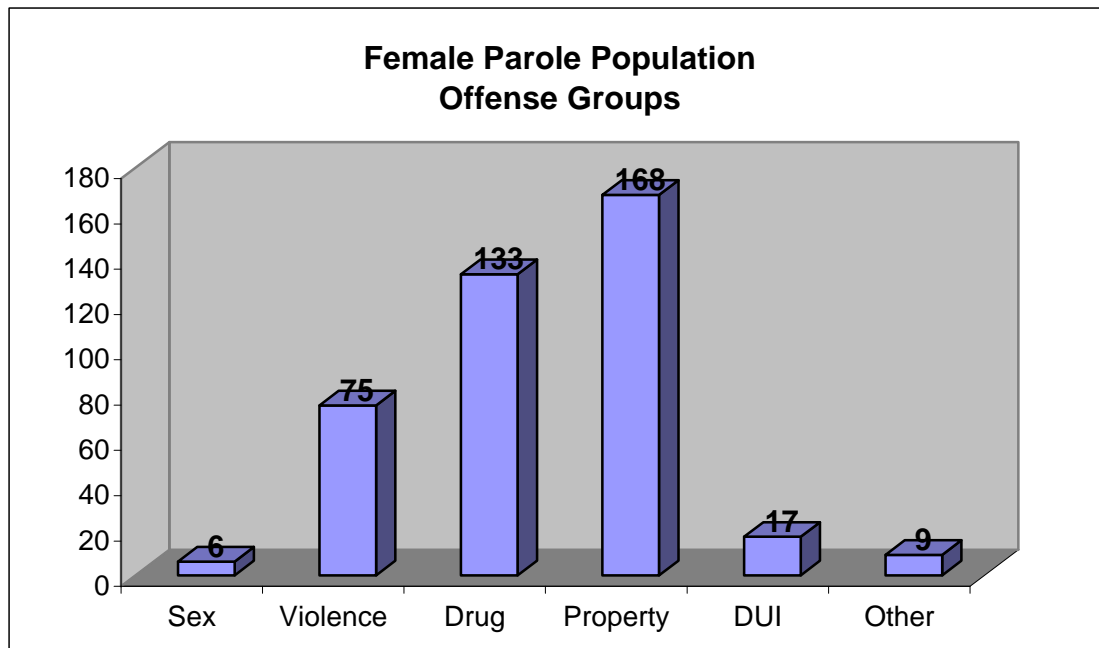


**Average Distribution of Females Parole Violators
by Offense Group
2000 - 2004**



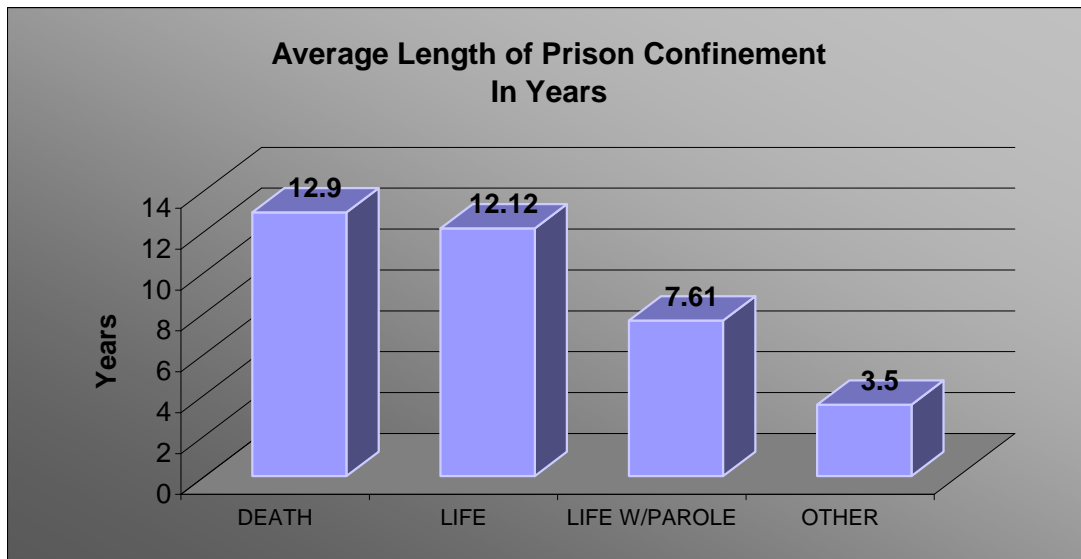
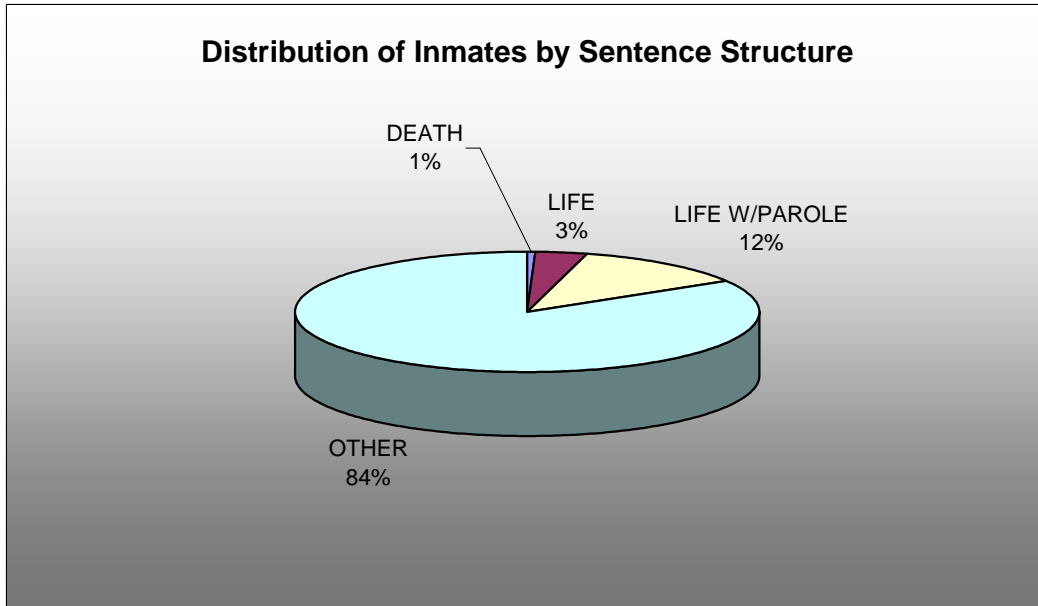


Less than one half of the male prison population is comprised of violent offenders while violent female offenders represent only one fourth. The largest offense group among the female population is property.



The distribution of the parole population by offense group resembles that of the active prison population. Violent offenders are the largest offense group for the male population while property offenders are the largest offense group for the female population.

SENTENCE STRUCTURES AND LENGTH OF PRISON INCARCERATION



CUSTODY DISTRIBUTION FOR IN-HOUSE POPULATION

